

## Line final control

## HZ10/A

380.510.000

- Visual monitoring
- Pressure gauge 0-250 bar
- Pressure switch 10-160 bar

### Application

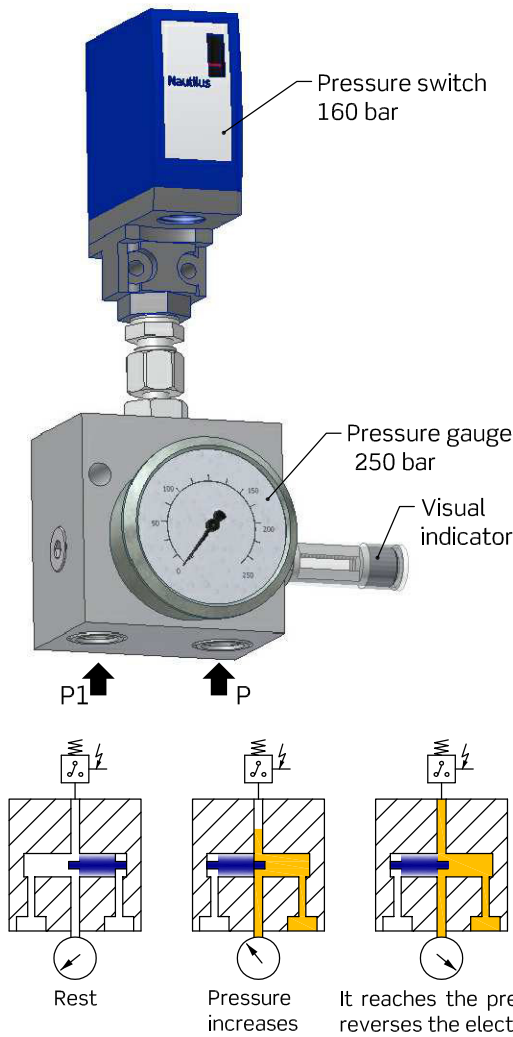
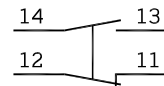
It is installed at the end of the double line circuit after the last distributor to control and verify the system's operation.

### Operation

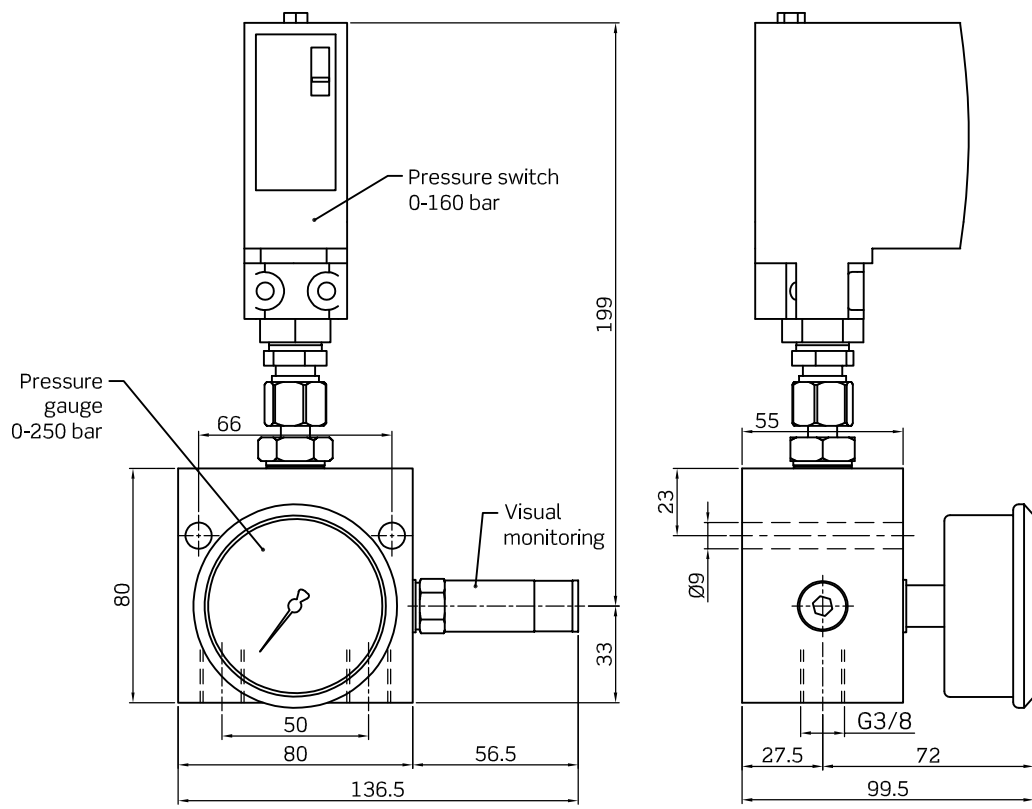
The sequential pressurisation within pressure lines P and P1 causes the line selector piston to move, this is electrically indicated by the pressure switch and visually shown by the rod that moves connected to the piston.

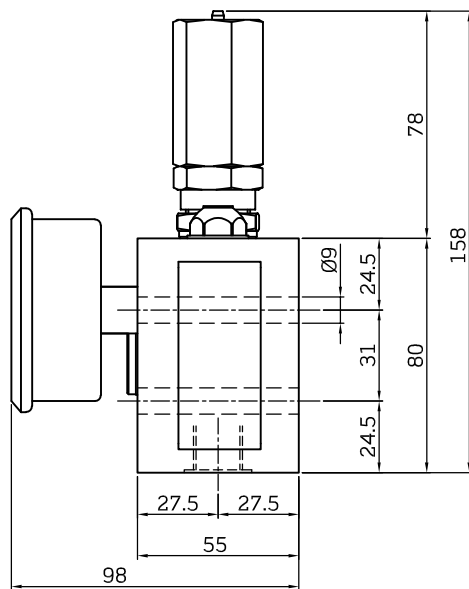
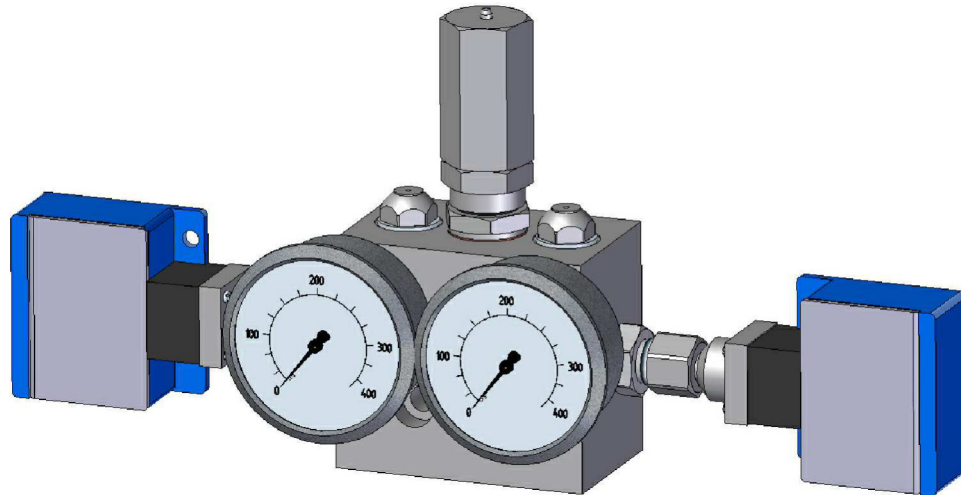
### Technical characteristics

Maximum pressure..... 250 bar  
 Normal working pressure..... 50÷80 bar  
 Pressure switch..... 10÷160 bar  
 Working temperature..... -25°C ÷ 70°C  
 Protection degree / Norm..... IP66 / UL,CSA  
 Maximum power..... 10A  
 Connection through terminal:



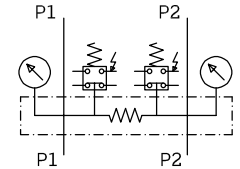
Reference **HZ10 / A-1**





**Line final differential control**  
**HZ15/A-1**

380.600.000



**Application**

For controlling the operation of the system in double line installations.

**Operation**

It is mounted before the last distributor in long installations where it is desired to check and carry out the reversal operation by controlling the differential pressure between the two lines.

The alternative pressurization of lines P1 and P2 causes the displacement of the internal piston, activating the microswitch. The displacement of that piston is visually verifiable by means of the pressure gauge.

The differential of the pressure is adjustable between 20 and 100 bar by means of the regulator.

Technical characteristics of the microswitch

Protection degree..... IP 66

Category of use..... AC-15

3A 240V

Ui:500V / Uimp:6kV

